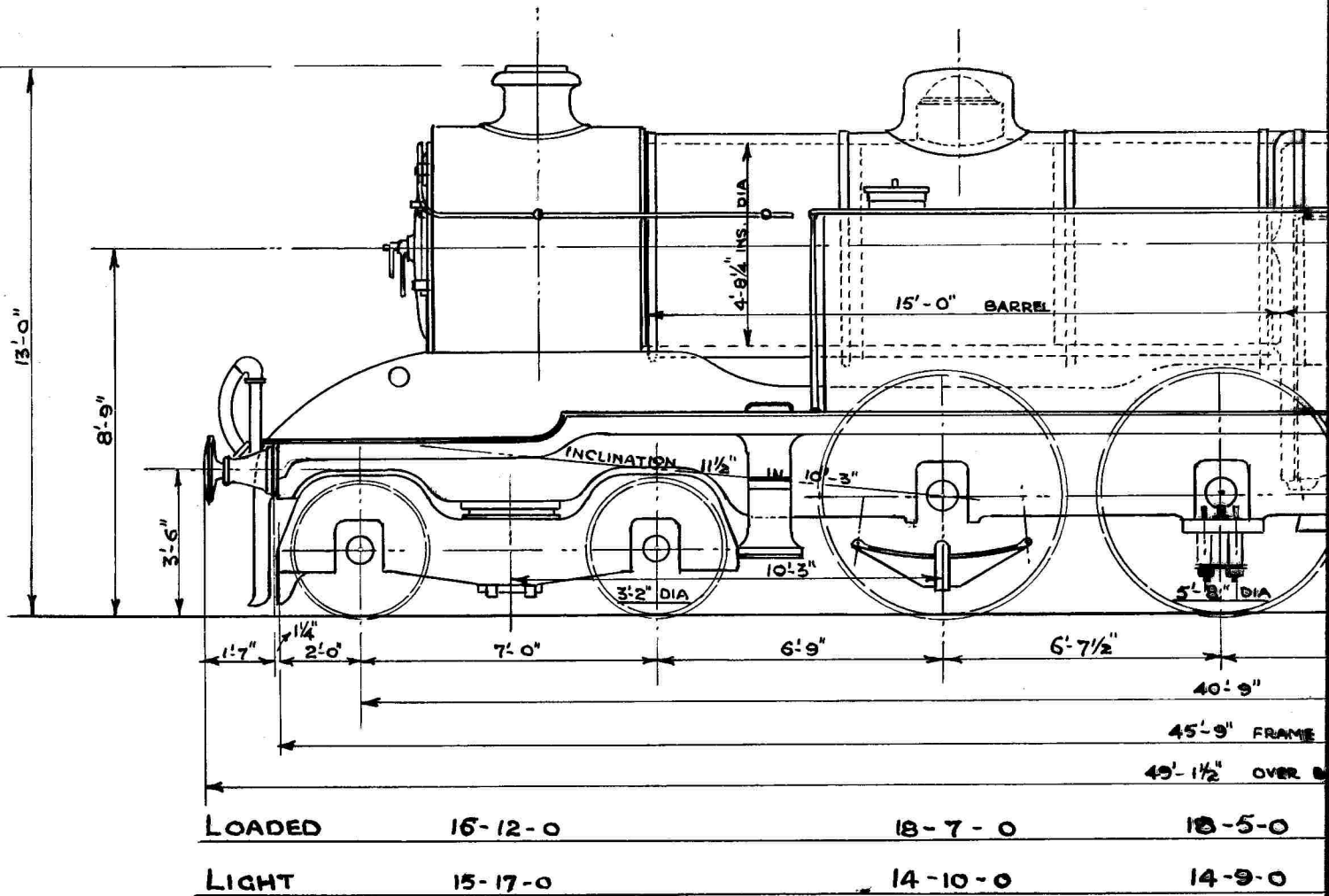


# 19½" x 26" BOGIE PASSENGER TANK



TOTAL WEIGHT. LOA  
" " LIC

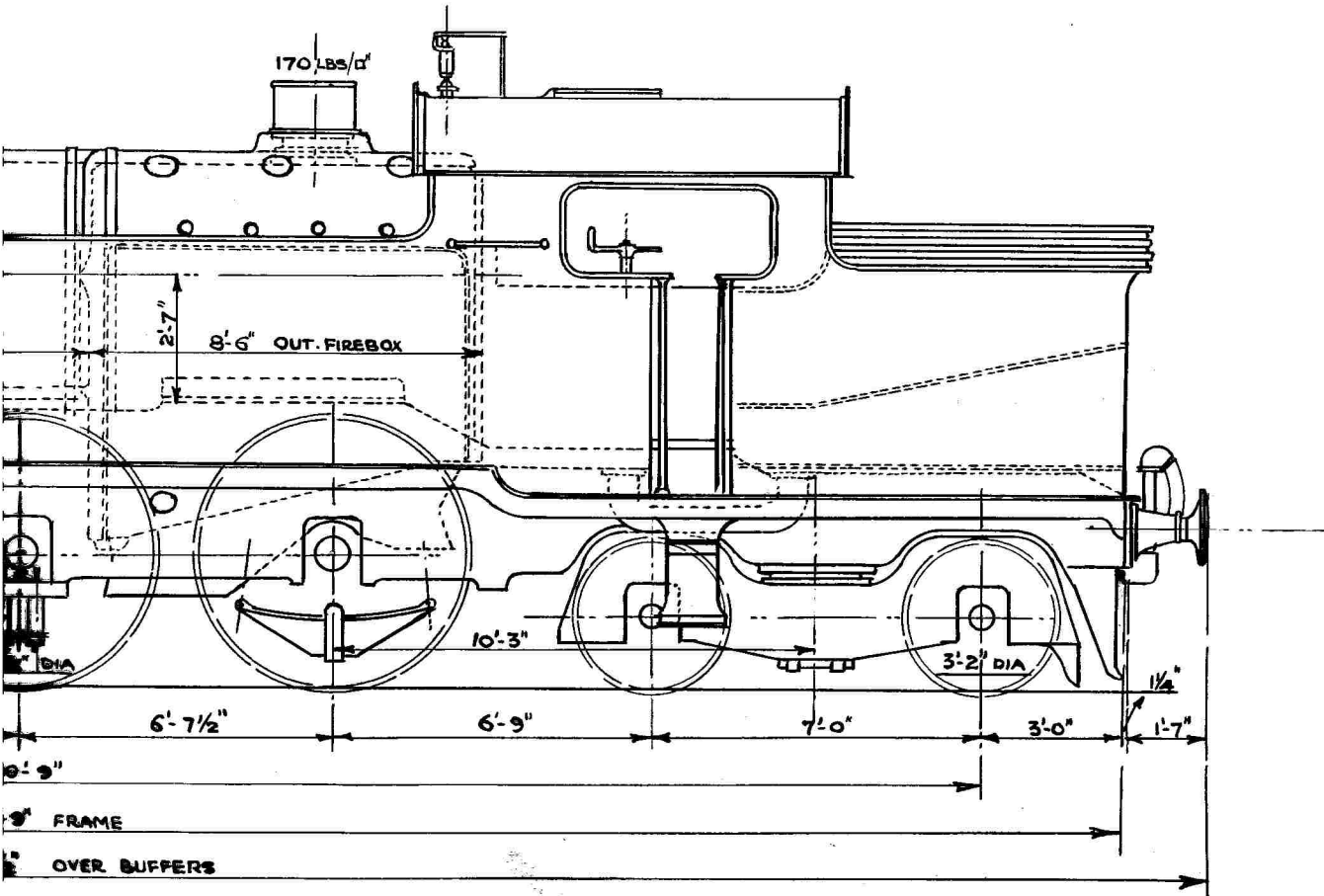
CYLINDERS (2. INSIDE) 19½" DIA x 26" STROKE		GRATE AREA		26 SQ. FT.	WIDTH
WORKING PRESSURE	170 LBS Q"	FIREBOX HEATING SURFACE	153 SQ. FT.	230 TUBES	2" EXT. DIA.
TUBES	" " 1850 " "	N° OF ENGINES IN CLASS		5	COAL
TOTAL	" " 2003 " "	ENGINE NOS. {		F.R. 115 TO 119 LMS 11100 TO 11104	TRACT

# TANK ENGINES —

4 BUILT BY KITSON & CO. IN 1920

1 " " " " " 1921

10



3-5-0      18-6-0      22-0-0

2-9-0      11-5-0      15-10-0

LOADED T. C. Q. 92-15-0

LIGHT 72-6-0

ADHESION @ 450 LBS/TON	24,638 LBS
" " 600 " "	32,850 "
WIDTH OVER FOOTPLATE	8'-6"
MAX. ROLLING LOAD ON 30' SPAN	40.2 TON
TANK CAPACITY	2200 GALLS
" LOAD PER FT. RUN OVER BUFFERS	1.89 "
COAL CAPACITY	4 TONS
" " " " " WHEELBASE	2.28 "
TRACTIVE EFFORT	21,008 LBS

WIDTH OVER FOOTPLATE 8'-6"  
 TANK CAPACITY 2200 GALLS  
 COAL CAPACITY 4 TONS  
 TRACTIVE EFFORT 21,008 LBS