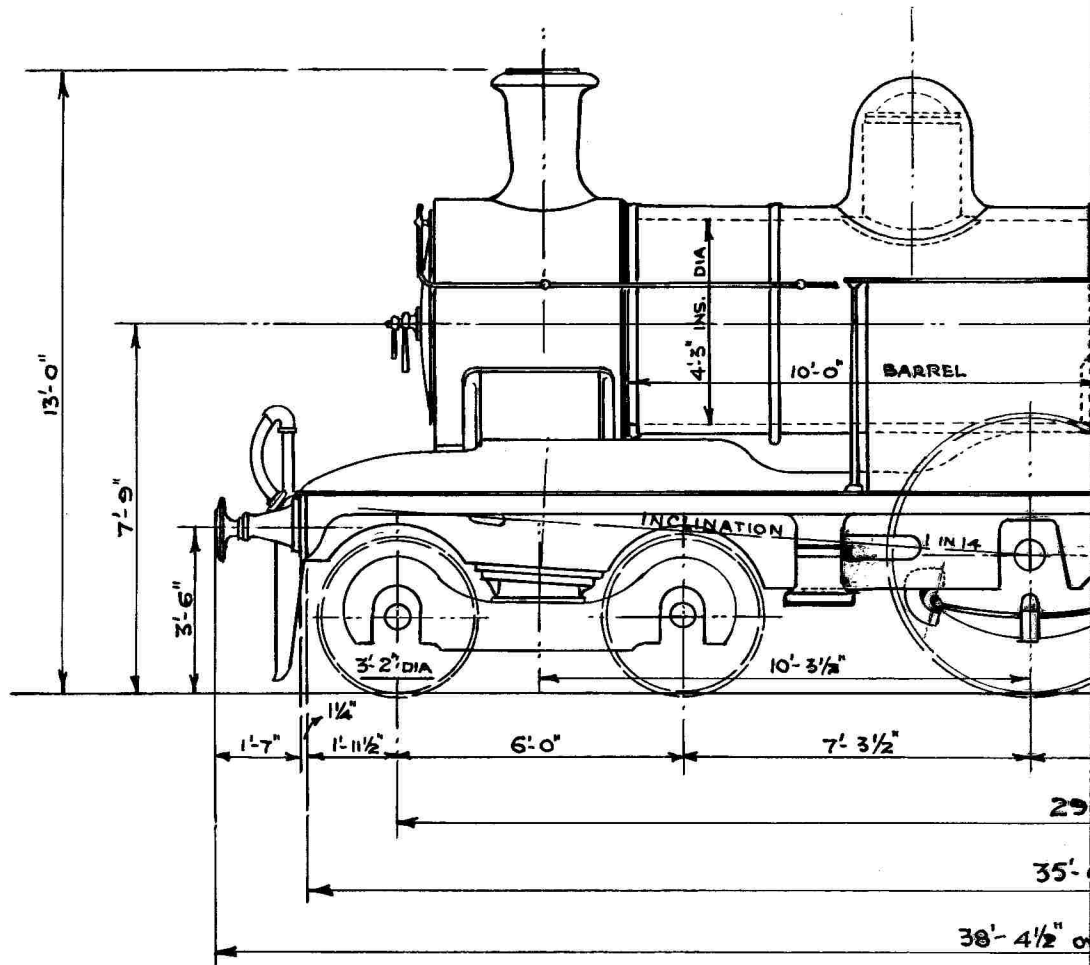


# 17½" x 24" BOGIE PASS ENGINE



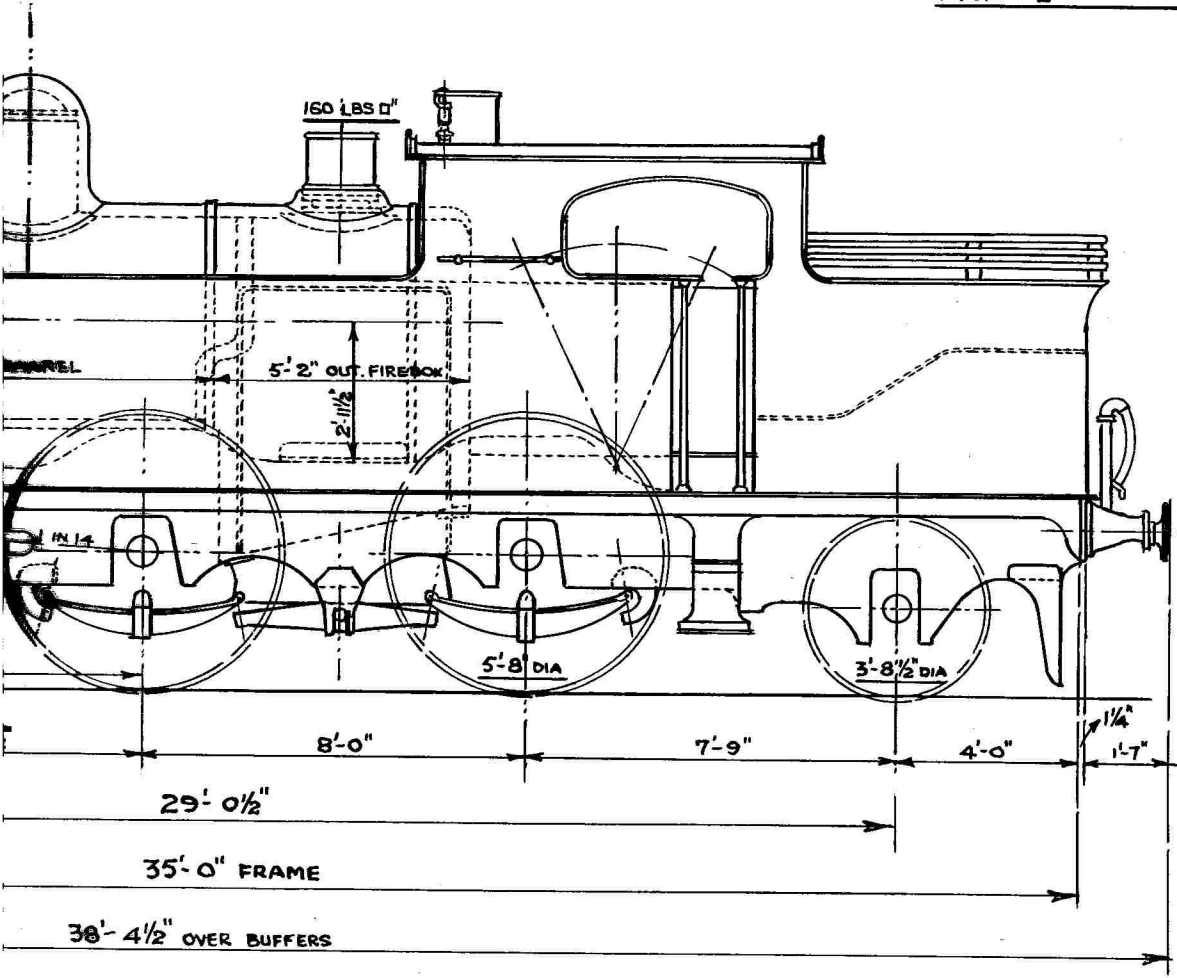
LOADED	16 - 7 - 0	14 - 14 - 0
LIGHT	15 - 10 - 0	11 - 15 - 0

TOTAL WEIGHT LOADED  
" " LIGHT

CYLINDERS (2.INSIDE) 17½" x 24" STROKE		
WORKING PRESSURE 160 LBS □"	GRATE AREA 15.4 SQ.FT.	WIDTH OVER FOOTPL
FIREBOX HEATING SURFACE 88 SQ.FT	220 TUBES 1¾" EXT. DIA.	TANK CAPACITY 1750
TUBES " " 1039 " "	NO. OF ENGINES IN CLASS: 6	COAL "
TOTAL " " 1127 " "	ENGINE NOS: { P.R. 38 TO 43 LMS 11080 TO 11085	TRACTION EFFORT 14

# ENGINE PASSENGER TANK ENGINE

38,39	2	BUILT BY KITSON & CO. IN 1915
42,43	2	" " " " " " 1916
40,41	2	" VULCAN FOUNDRY " 1916



14-14-0	14-12-0	13-16-0
11-15-0	11-1-0	8-13-0
<b>WT LOADED 59-9-0</b>		
<b>LIGHT 46-19-0</b>		

	ADHESION@450LBS/TON	13,185 LBS	★ NOTE. ENGINES No. 38 & 39 ONLY 208 TUBES 1 3/4" EXT. DIA. TUBES HEATING SURFACE 982 sq ft TOTAL " " 1070 "
PER FOOTPLATE 8'-0"	" " 600 " "	17,580 "	
CAPACITY 1750 GALLS	MAX. ROLLING LOAD ON 30' SPAN	26.6 TONS	
" 3 TONS	" LOAD PER FT. RUN OVER BUFFERS	1.55 "	
EFFORT 14,700 LBS	" " " " " WHEELBASE	2.05 "	