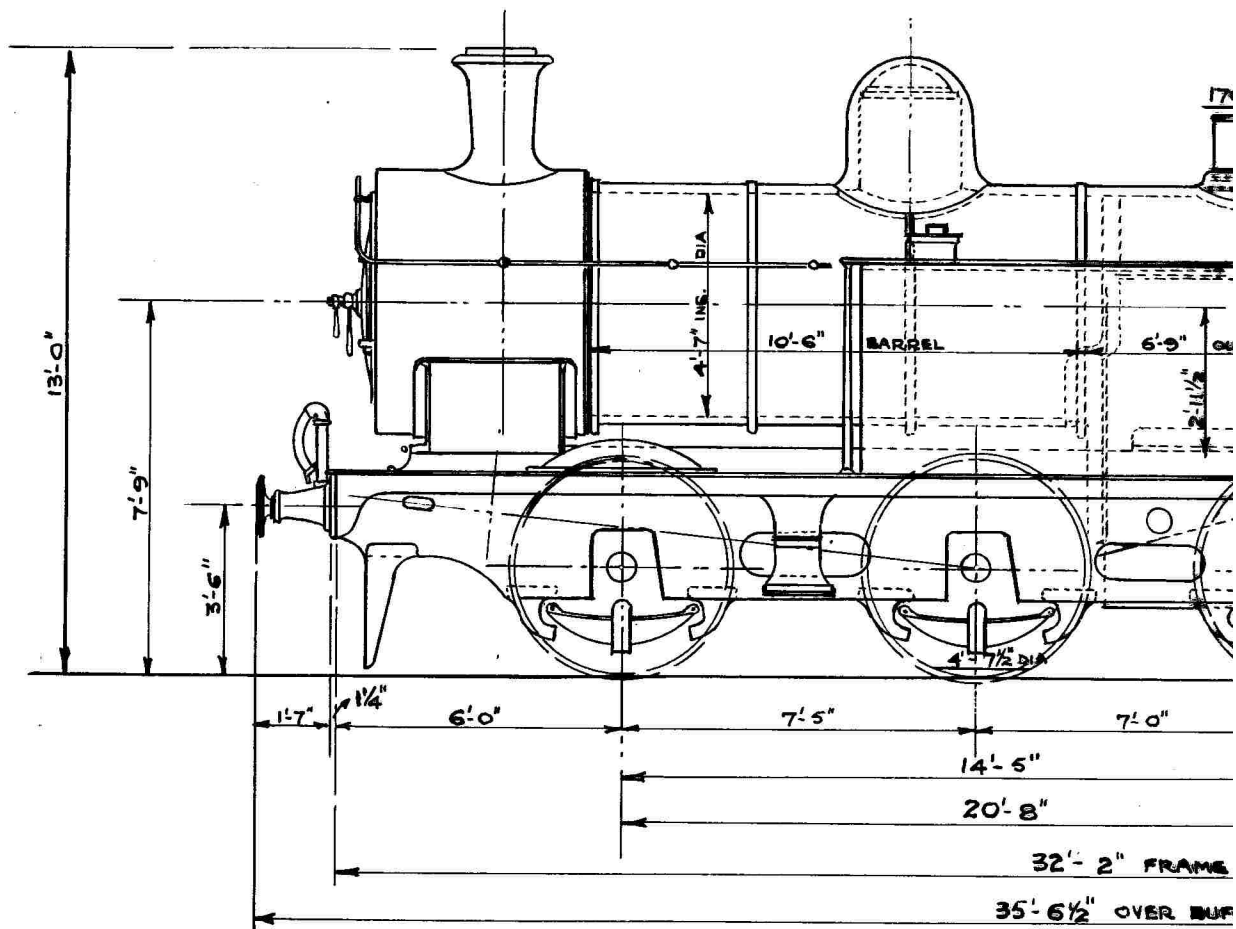


18" x 26" RADIAL TANK



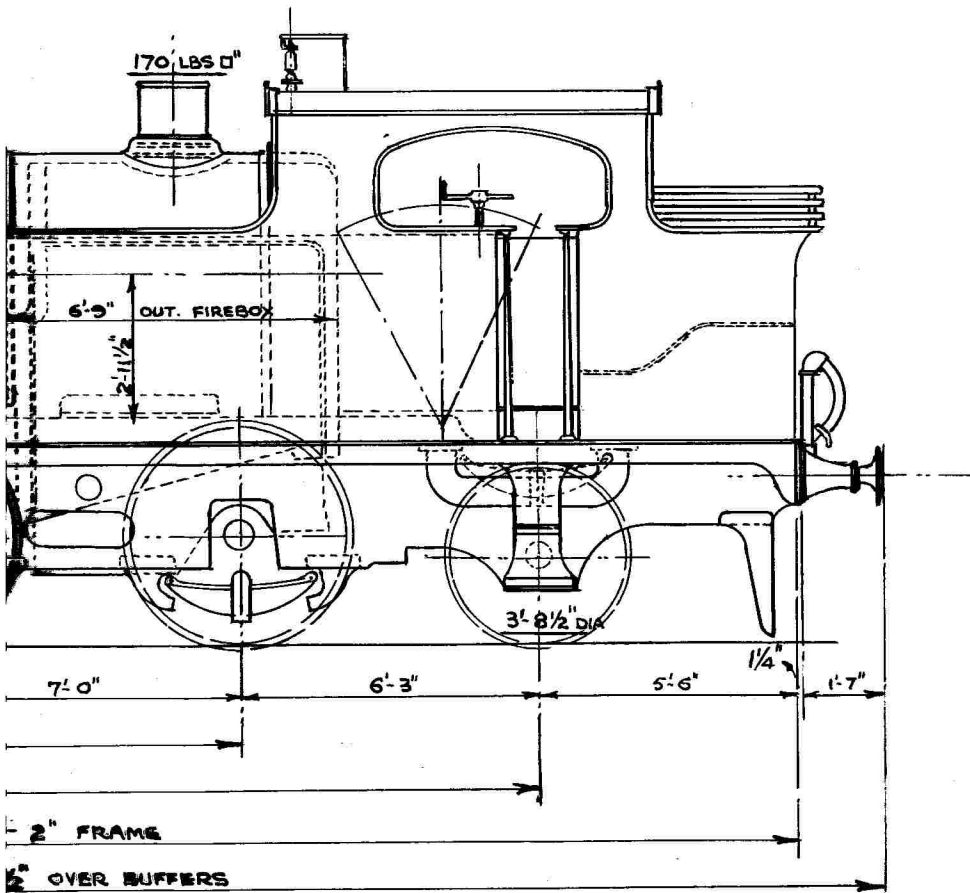
LOADED	14-17-0	15-19-0
LIGHT	13-10-0	14-11-0

TOTAL WEIGHT	LOADED	
"	"	LIGHT

CYLINDERS (2. INSIDE) 18" DIA x 26" STROKE		
FIREBOX HEATING SURFACE 107 SQ. FT.	WORKING PRESSURE 170 LBS Q"	WIDTH OVER
TUBES " " 1,139 " "	230 TUBES 1 3/4" EXT. DIA.	WATER CAP
TOTAL " " 1,246 " "	No. IN CLASS 2.	COAL
GRATE AREA 20.5 " "	ENGINE NOS: { F.R. 92, 93 LMS 11643, 11644	TRACTIVE E

TANK ENGINES.

12



14-10-0 13-6-6

9-17-0 8-11-0

LOADED 58-12-0

LIGHT 46-9-0

		ADHESION @ 450 LBS PER TON	20,385 LBS
		" " 600 " " "	27,180 "
DEPTH OVER FOOTPLATE	8'-3"	MAX. ROLLING LOAD ON 30' SPAN	32.4 TONS
WATER CAPACITY	1,170 GALLS.	" LOAD PER FT. RUN OVER BUFFERS.	1.65 "
WEIGHT	2 TONS 5 CWT	" " " " " "	WHEELBASE 283 "
TRACTION EFFORT	21,933 LBS.		