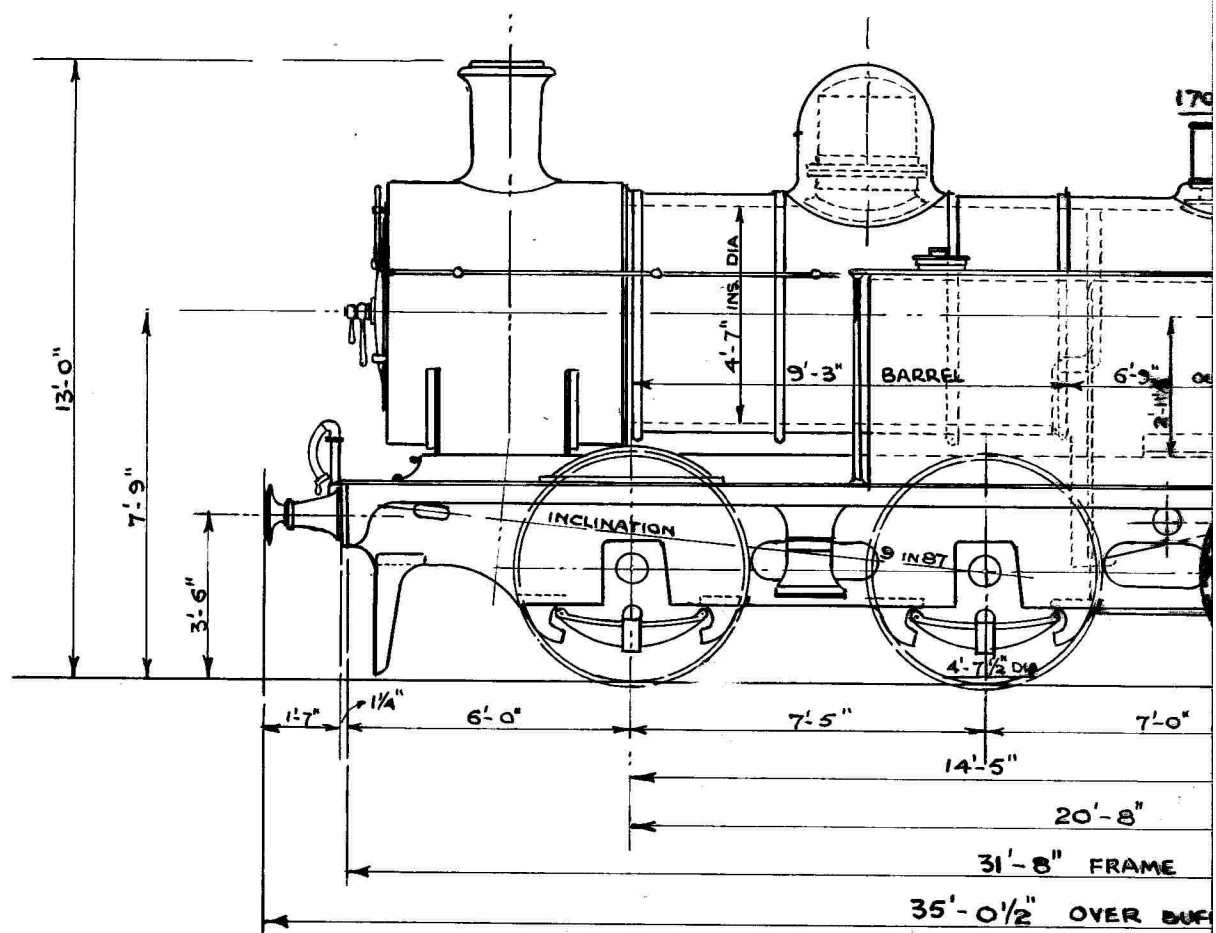


# 18" x 26" RADIAL TANK

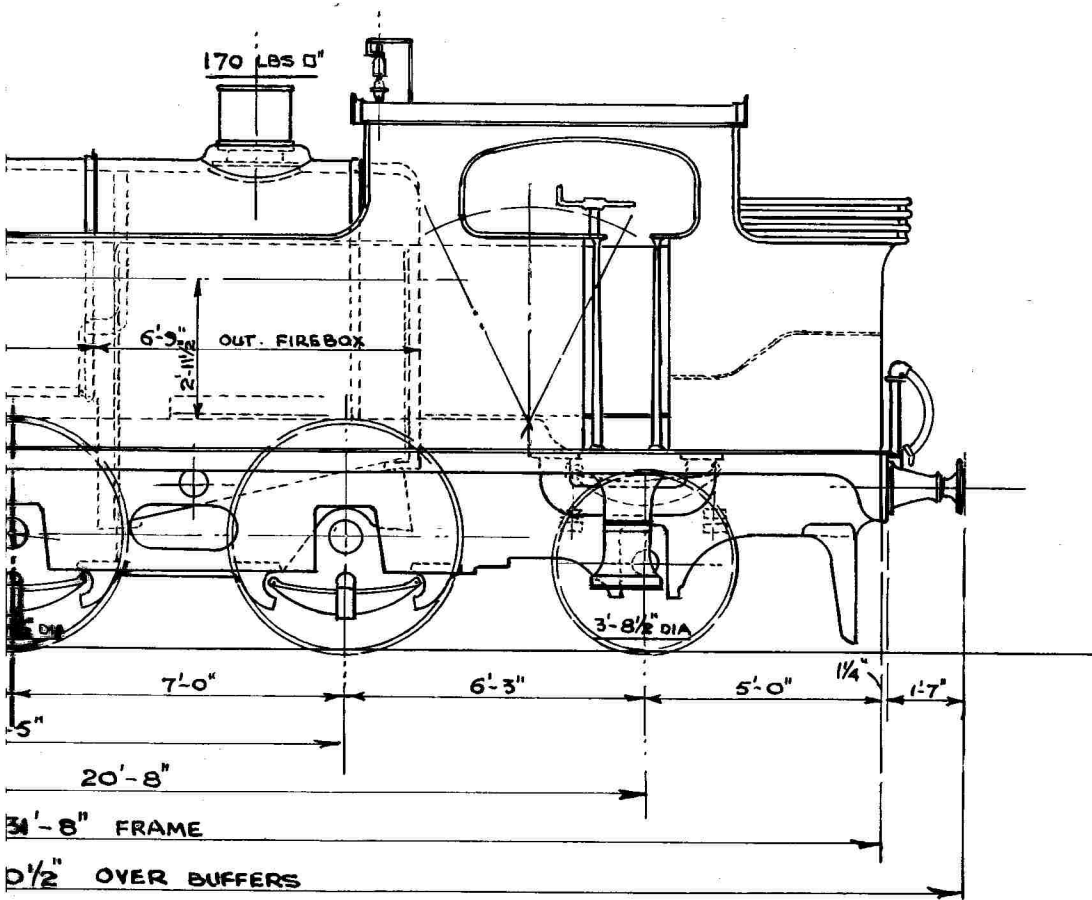


	14'-10-0	15'-15-0
<b>LOADED</b>		
<b>LIGHT</b>	13'-16-0	13'-12-0
	<b>TOTAL WEIGHT LOA</b>	
	" " LIGH	

CYLINDERS (2. INSIDE) 18" DIA x 26" STROKE			
FIREBOX HEATING SURFACE 105 SQ. FT	WORKING PRESSURE	170 LBS Q"	WIDTH OVER
TUBES " " 911 " "	208 TUBES	1 3/4" EXT. DIA	WATER CA
TOTAL " " 1,016 " "	NO: IN CLASS	2.	COAL
GRATE AREA 20.5 " "	ENGINES NO	{ F.R. 94,95 LMS. 11641, 11642	TRACTNE E

# DIAL TANK ENGINES

13



-15-0	14-13-0	12-0-0
-12-0	11-13-0	7-9-0

WEIGHT LOADED 56-18-0  
 " LIGHT 46-10-0

ADHESION @ 450 LBS PER TON	20,205 LBS
" " 600 " " "	26,940 "
MAX. ROLLING LOAD ON 30' SPAN	31.7 TONS
" LOAD PER FT. RUN OVER BUFFERS	1.62 "
" " " " " " WHEELBASE	2.75 "

WIDTH OVER FOOTPLATE	8'-3"
WATER CAPACITY	1,150 GALLS
COAL	2 TONS 5 CWT.
TRACTIVE EFFORT	21,933 LBS