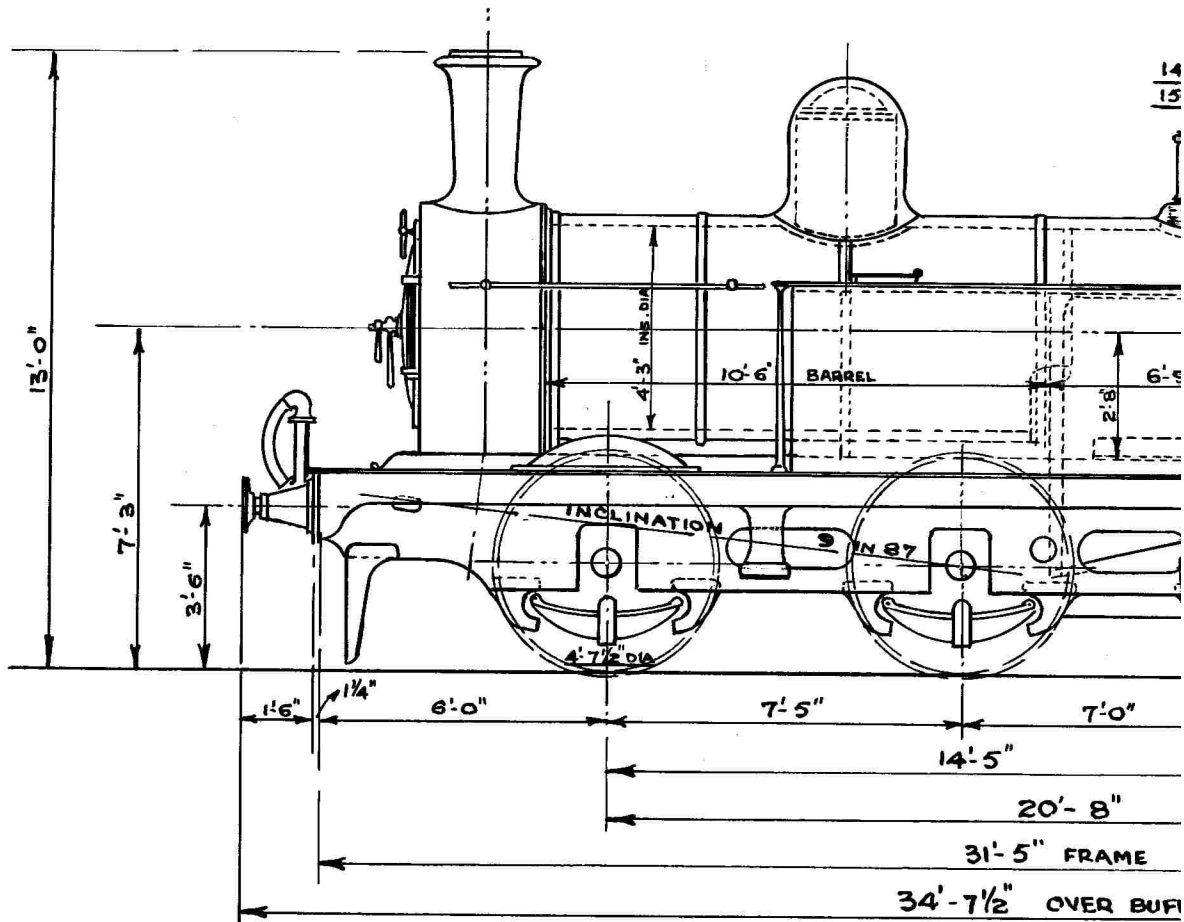


# 18" x 26" RADIAL

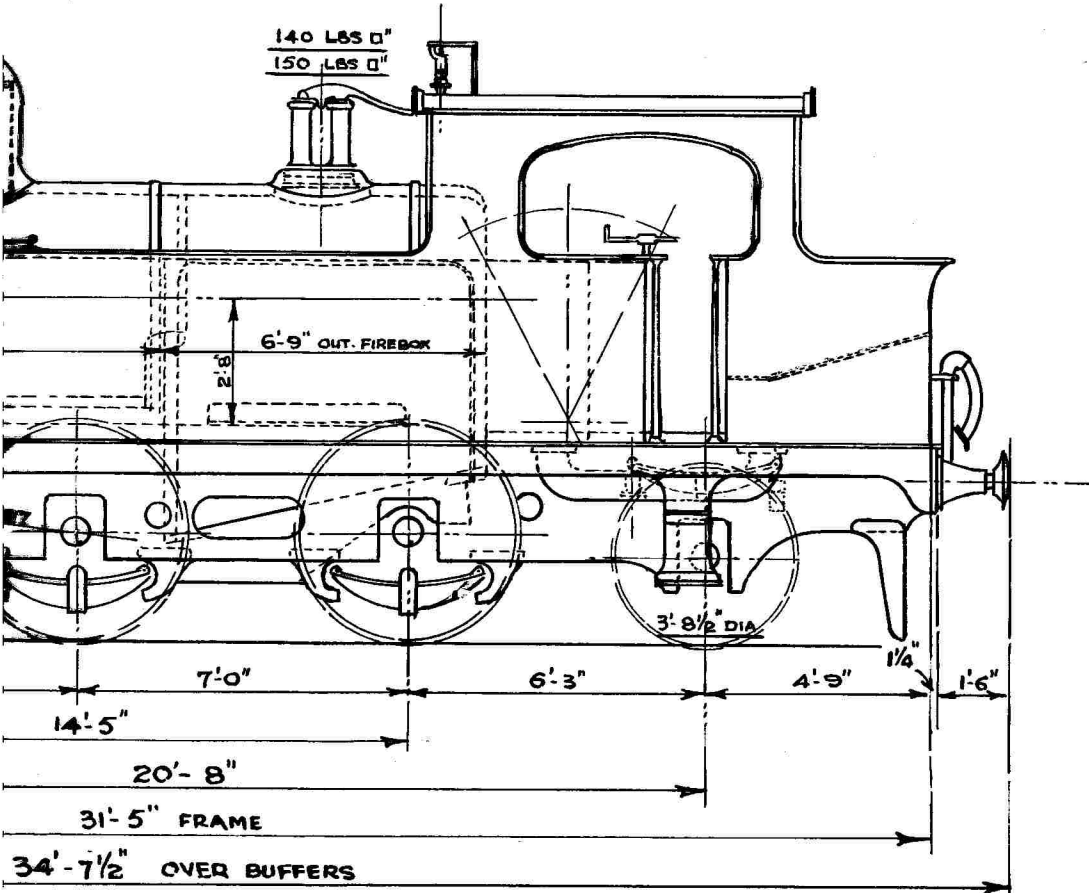


LOADED	14-8-0	14-10-0
LIGHT	13-9-0	13-10-0

TOTAL WEIGHT LOADED  
" " LIGHT

CYLINDERS (2. INSIDE)	18" DIA x 26" STROKE			
FIREBOX HEATING SURFACE	105 SQ. FT.	WORKING PRESSURE.	{ NO 113 - 140 LBSQ NO 114 - 150 " "	WIDTH OVER
TUBES	" " 1029 " "	208 TUBES	1 3/4" EXT. DIA.	WATER CAP
TOTAL	" " 1,134 " "	NO. IN. CLASS	2 (112 SCRAPPED)	COAL
GRATE AREA	20.5 " "	ENGINE NOS.	{ F.R. 113, 114. LMS 11623, 11624	TRACTIVE EF

# " RADIAL TANK ENGINES.



14-10-0	14-1-0	11-15-0
13-10-0	11-5-0	7-15-0

WT LOADED	54 - 14 - 0
LIGHT	45 - 19 - 0

ADHESION @ 450 LBS. PER TON	19,327 LBS
" " 600 " " "	25,770 "
MAX. ROLLING LOAD ON 30' SPAN	30.3 TONS
" LOAD PER FT. RUN OVER BUFFERS	1.58 "
" " " " " "	WHEELBASE 2.64 "

WIDTH OVER FOOTPLATE	8'-6"
WATER CAPACITY	1400 GALLS
COAL	1 TON 10 CWTs
TRACTIVE EFFORT	{ No. 113 18,062 LBS No. 114 19,352 "