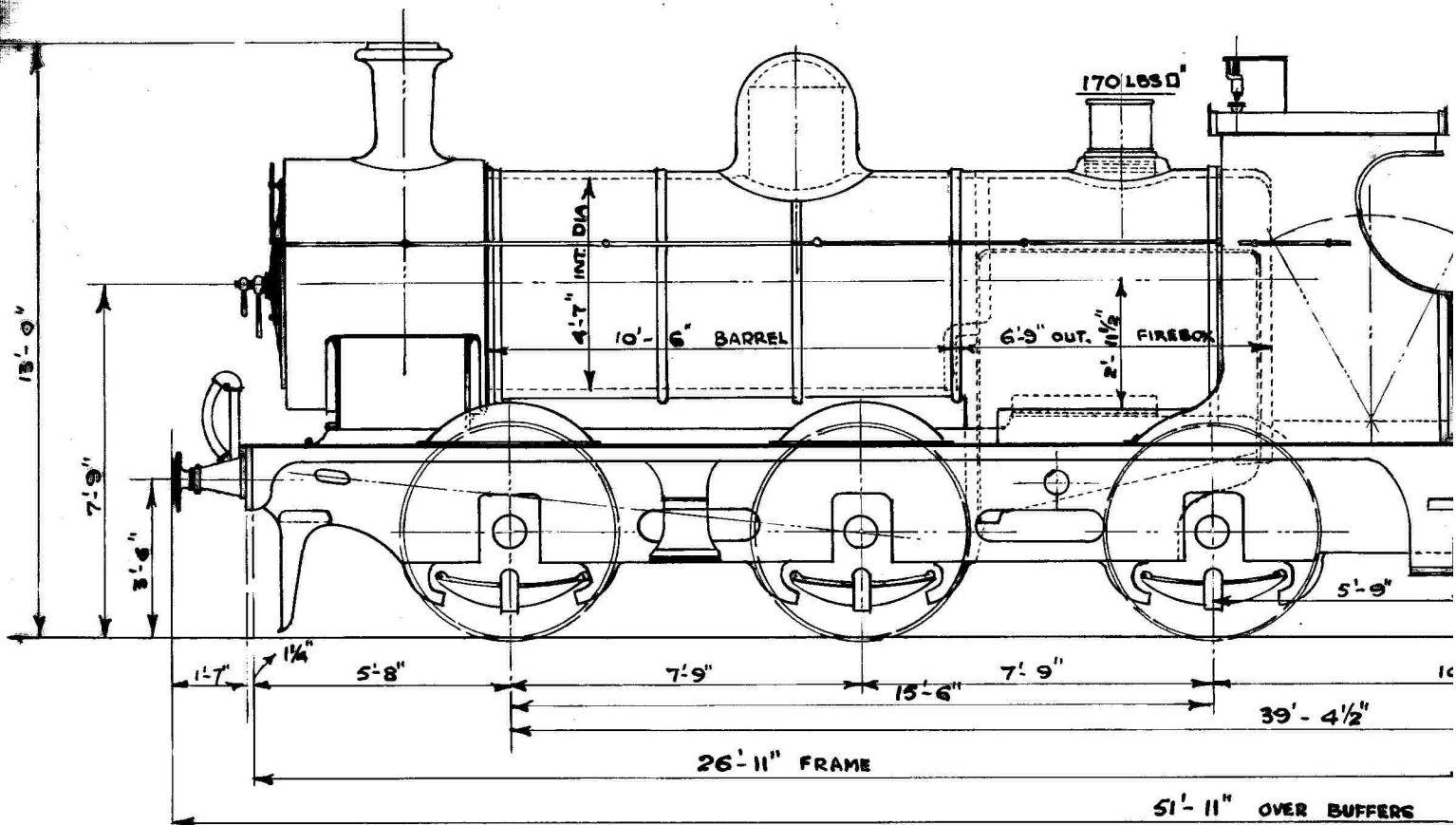


# 18" x 26" Goods Engine



LOADED	14-4-0	15-6-0	15-7-0
LIGHT	12-6-0	14-10-0	13-5-0
ENGINE LOADED		44-17-0	
" LIGHT		40-1-0	

TOTAL WEIGHT LOADED	44-17-0
" " LIGHT	40-1-0

CYLINDERS (2: INSIDE) 18" DIA x 26" STROKE	WORKING PRESSURE 170 LBS/sq"	WIDTH
FIREBOX HEATING SURFACE 107 sq. ft.	230 TUBES 1 3/4" EXT. DIA.	WATER
TUBES " " 1,139 " "	No: IN CLASS 15	COAL
TOTAL " " 1,246 " "	ENGINE NOS: { F.R. 19/24 & 27/35 LMS 12498 TO 12512	TRACTIVE
GRATE AREA 20.5 " "		

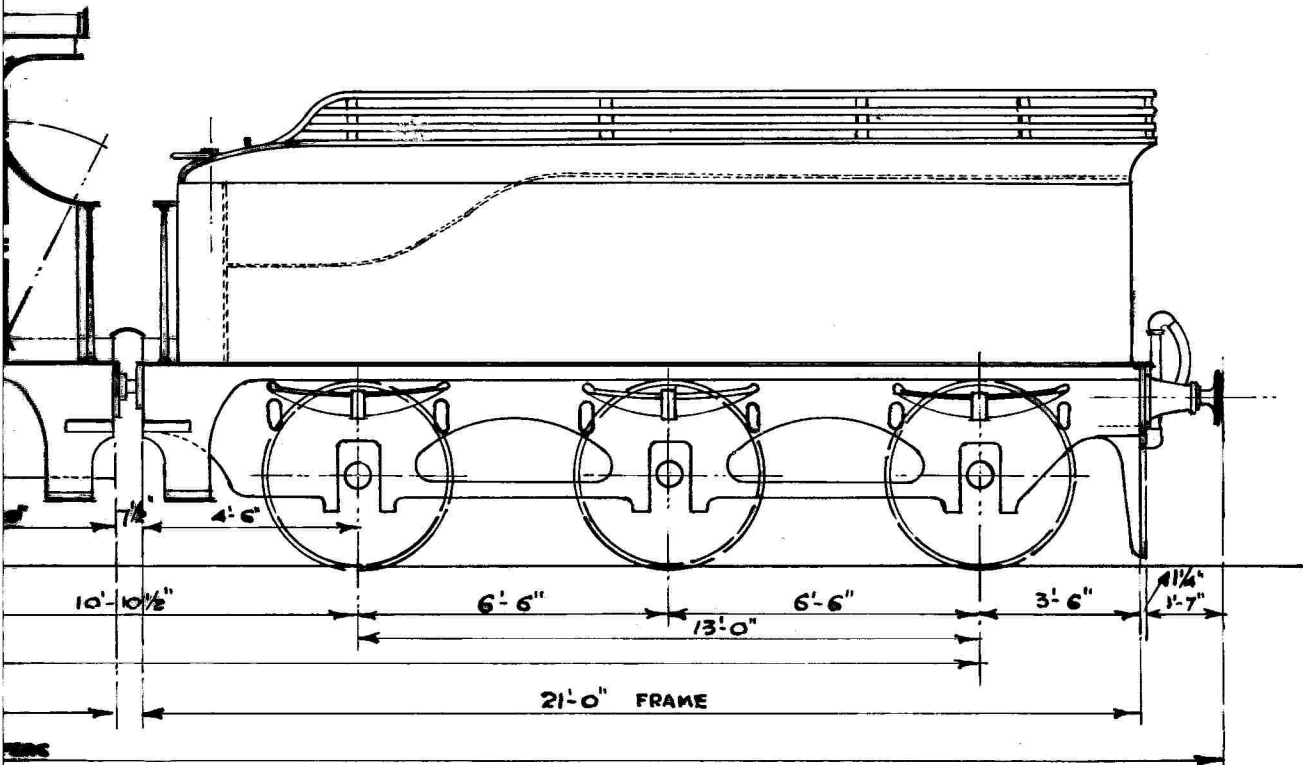
No. 27.28. 2 BUILT BY NORTH BRITISH LOCO. CO. 1914

" 19 TO 22.4 " " KITSON & CO 1918

" 23,24,29,30.4 " " NORTH BRITISH LOCO CO. 1918

" 31 TO 35 5 " " " " " 1920

5



12-7-0	12-9-0	12-13-0
6-10-2	5-12-0	5-11-2

TENDER LOADED 37-9-0  
" LIGHT 17-14-0

T. C. G.  
82 - 6 - 0

57 - 15 - 0

ADHESION @ 450 LBS/TON	20.182 LBS
" " 600 " "	26.910 "
MAX. ROLLING LOAD ON 30' SPAN	29.4 TONS
" LOAD PER FT. RUN OVER BUFFERS	1.59 "
" " " " " WHEELBASE	2.09 "
" " " " " ENG.	2.89 "

WIDTH OVER FOOTPLATE	7'-9"
WATER CAPACITY	3300 GALLS
"	5 TONS
NETTIVE EFFORT	21,933 LBS.