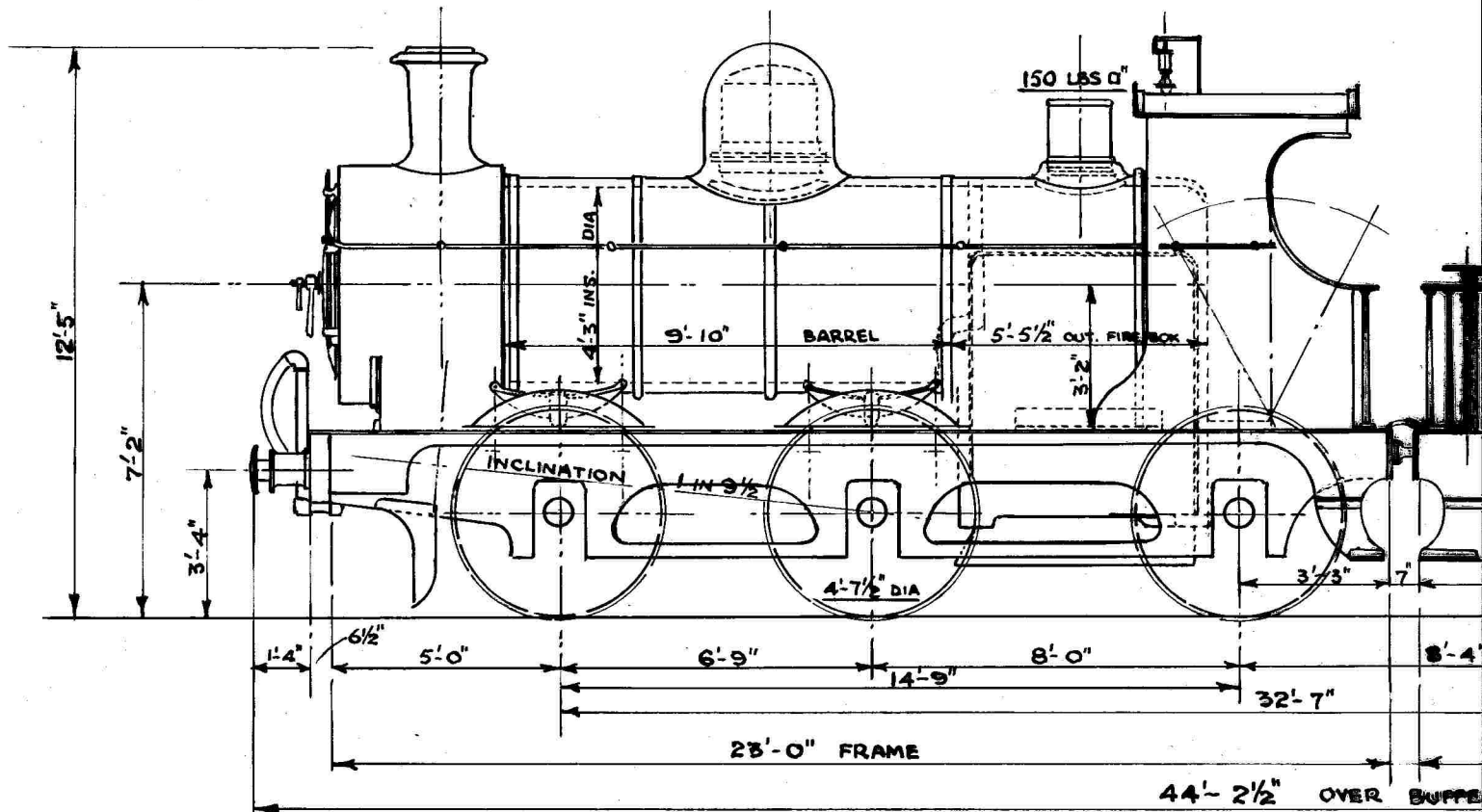


16" x 24" GOODS

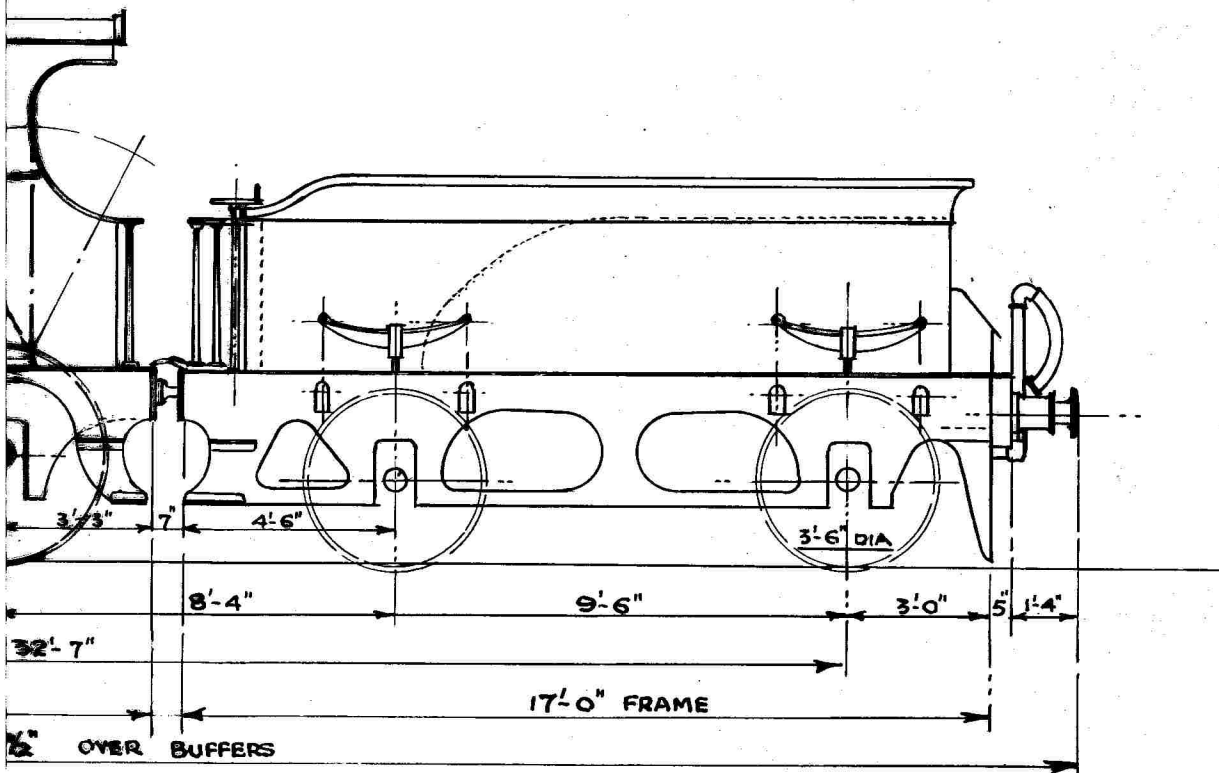


LOADED	11-12-0	12-8-0	9-7-0
LIGHT	10-9-0	11-5-0	8-10-0
ENGINE LOADED		33-7-0	
" LIGHT		30-4-0	
TOTAL WEIGHT			LOADED 5
" " "			LIGHT 4

CYLINDERS (2. INSIDE) 16" DIA x 24" STROKE	WORKING PRESSURE 150 LBS D"	WIDTH OVER FOOT
REBOX HEATING SURFACE 101 sq. FT.	208 TUBES 1 3/4" EXT. DIA.	WATER CAPACITY
TUBES " " 966 " "	No. IN CLASS 5	COAL "
TOTAL " " 1067 " "	ENGINE NOS. { F.R. 49, 63, 65, 79, 90 LMS. 12065/6/7, 12070/5	TRACTION EFFORT
GRATE AREA 15.9 " "		

GOODS ENGINES

9



7-0	10-10-0	9-10-0
0-0	6-0-0	5-8-0
TENDER LOADED		20-0-0
" LIGHT		11-8-0

LOADED	T. 53 - C. 7 - Q. 0	ADHESION @ 450 LBS/TON 15,007 LBS
LIGHT	41 - 12 - 0	
WIDTH OVER FOOTPLATE 7'-3"		" " 600 " " 20,010 "
WATER CAPACITY 1600 GALLS		MAX. ROLLING LOAD ON 30' SPAN 23.14 TONS
" " 2 TONS 10 CWT		" LOAD PER FT. RUN OVER BUFFERS 1.21 "
NET TRACTIVE EFFORT 14,105 LBS		" " " " " " WHEELBASE 1.64 "
		" " " " " " ENG. " " 2.26 "